

HIMSS

Central & Southern Ohio Chapter

transforming healthcare through IT™

HIMSS

Central & Southern Ohio Chapter

transforming healthcare through IT™

Road to ICD-10; Initial Impact Assessment

St. Elizabeth Healthcare

Agenda



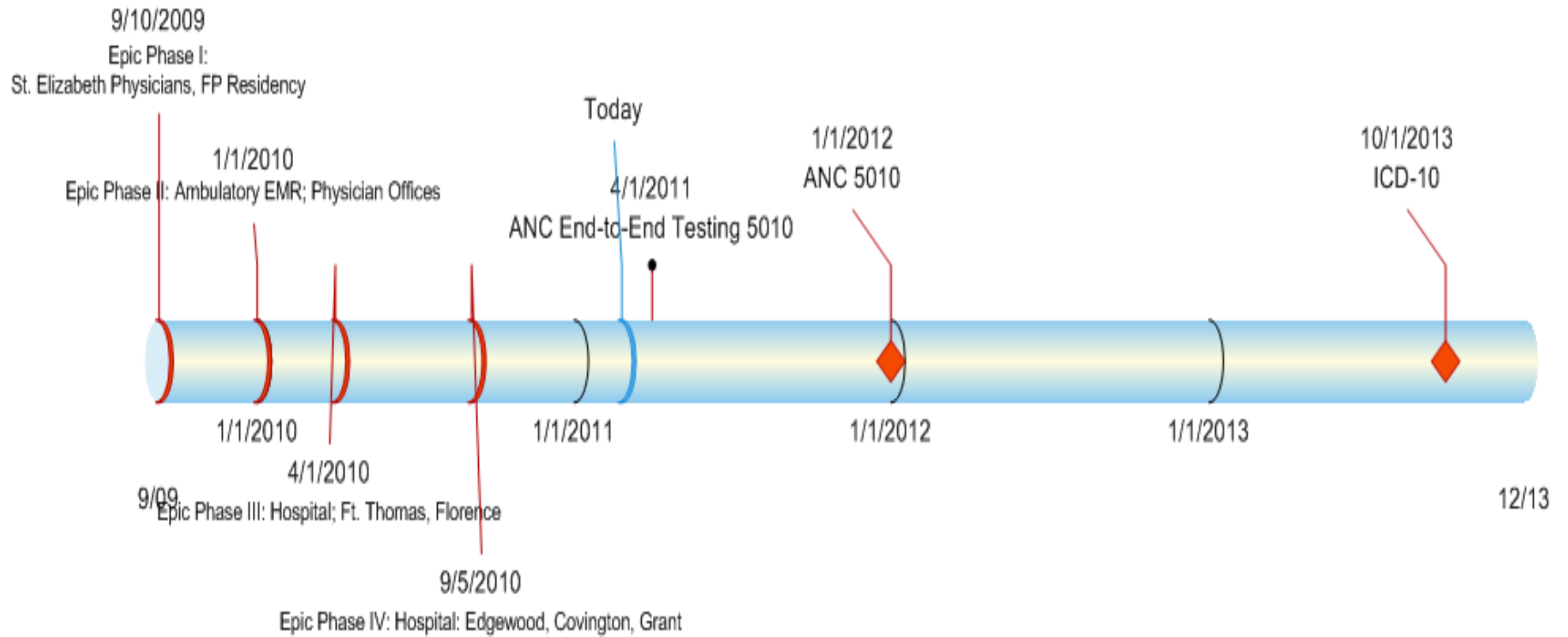
- St. Elizabeth Road to ICD-10
- ICD-10 Initial Impact Assessment Approach
- ICD-10 Initial Impact Assessment Findings
- Recommended Next Steps
- Recommended Project Structure
- ICD-10 Resource List
- Questions

ICD-10-CM/PCS Overview

Leadership Workshop

ST. ELIZABETH ROAD TO ICD-10

Implementation Timeline

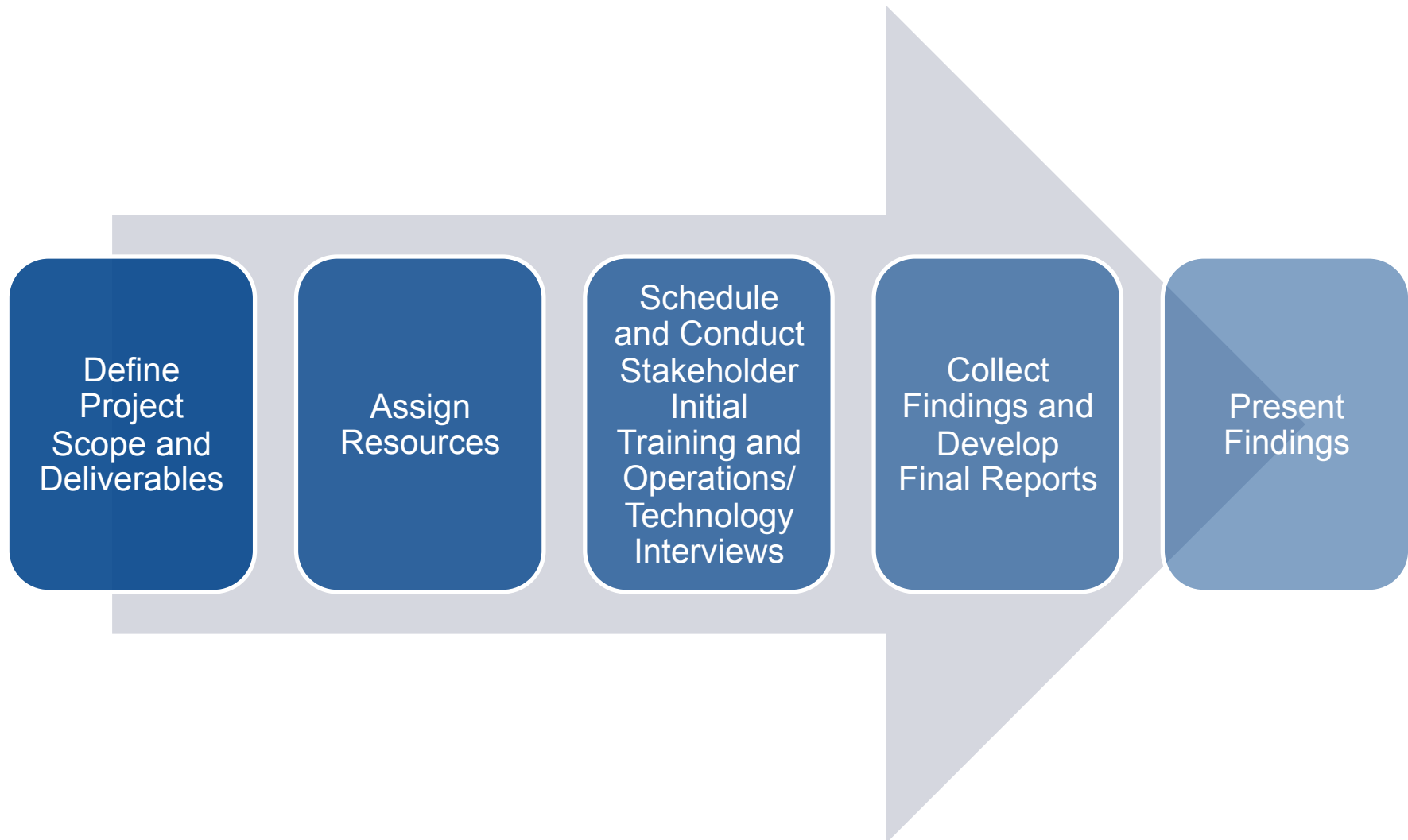


ICD-10-CM/PCS Overview

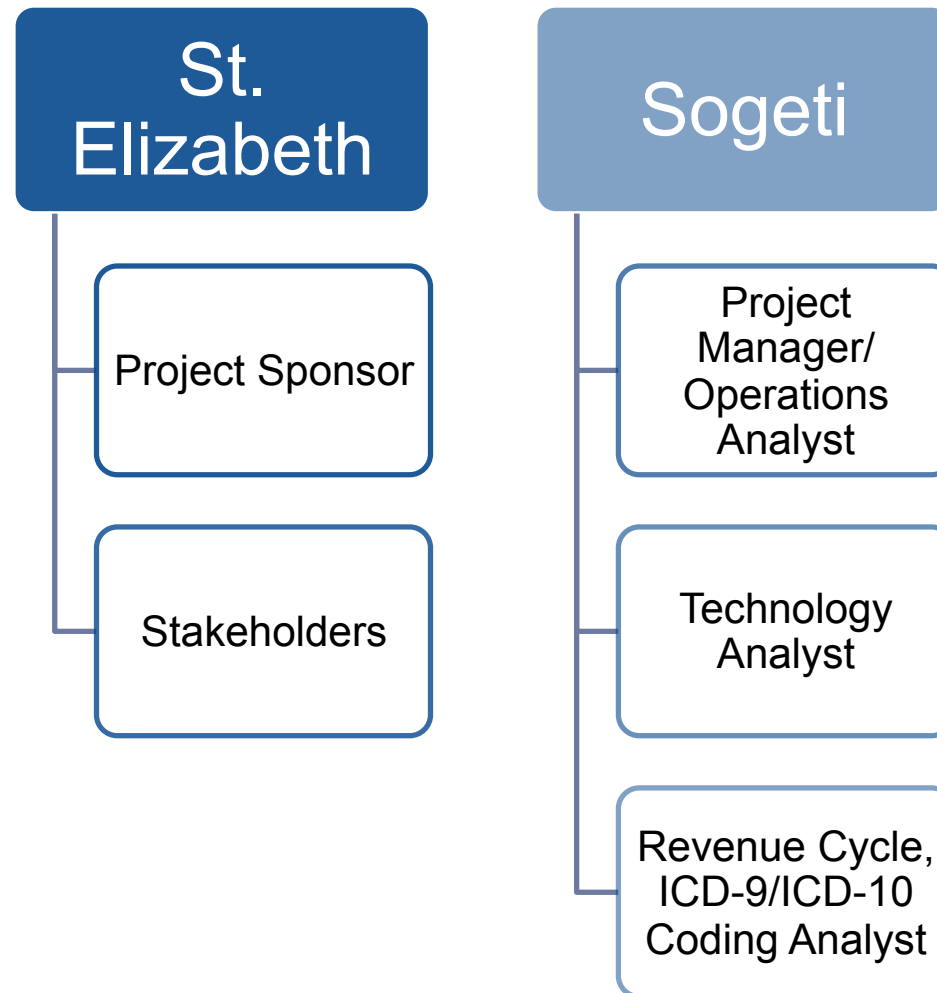
Leadership Workshop

ICD-10 INITIAL IMPACT ASSESSMENT APPROACH

Project Approach



Project Staffing



Project Milestones



	WK 0	WK 1	WK 2	WK 3	WK 4	WK 5	WK 6
Activity	Patient Data Extract Analysis						
		Project Initiation					
		Conduct Coding Documentation and Process Assessment					
		Conduct Workflow and Procedural Assessment					
		Conduct Technology Assessment					
				Conduct Implementation Benchmark Assessment			
					Identify Key Risks and Develop Assessment Report		
							Finalize Deliverable

Project Ranking



Ranking Area	Ranking Level			
	Minor	Modest	Medium	High
Impact	An event that, if it occurs, will cause little or no measurable impact to business operations.	An event that, if it occurs, will cause small delays in business operations that, in most cases, can be absorbed by the current staff.	An event that, if it occurs, will cause noticeable delays in business operations.	An event that, if it occurs, will cause significant delays in business operations.
Risk	Business operations will continue with minimal or routine modifications to the process	Business operations will continue will intermittent modifications to the process	Business Operations may be interrupted without complete stoppage	Business operations will stop, work will cease at time of transition
Cost Range (in thousands)	\$	\$\$	\$\$\$	\$\$\$\$

ICD-10-CM/PCS Overview

Leadership Workshop

ICD-10 INITIAL IMPACT ASSESSMENT FINDINGS

Key Recommendations



- Work with payers and partners throughout implementation to discover and mitigate changes to documentation and coding practices early
- Align partners early to assist with technology implementation activities
- Develop a Charter to support ICD-10 as a Program
- Identify and establish an executive Steering Committee
- Complete a detailed Gap Analysis
- Collect Gap Analysis findings and develop a program schedule, budget and work breakdown structure
- Identify key resources to lead ICD-10 Program Management and Project Management positions

Initial High Impact Findings



- Executive Leadership to mandate IT Governance standards are followed
- Stakeholders have low level of 5010 regulation implementation dates and impact awareness. Depending on vendors to adequately test claim transactions prior to 1/1/2012 may negatively impact revenue cycle
- Technology Modifications

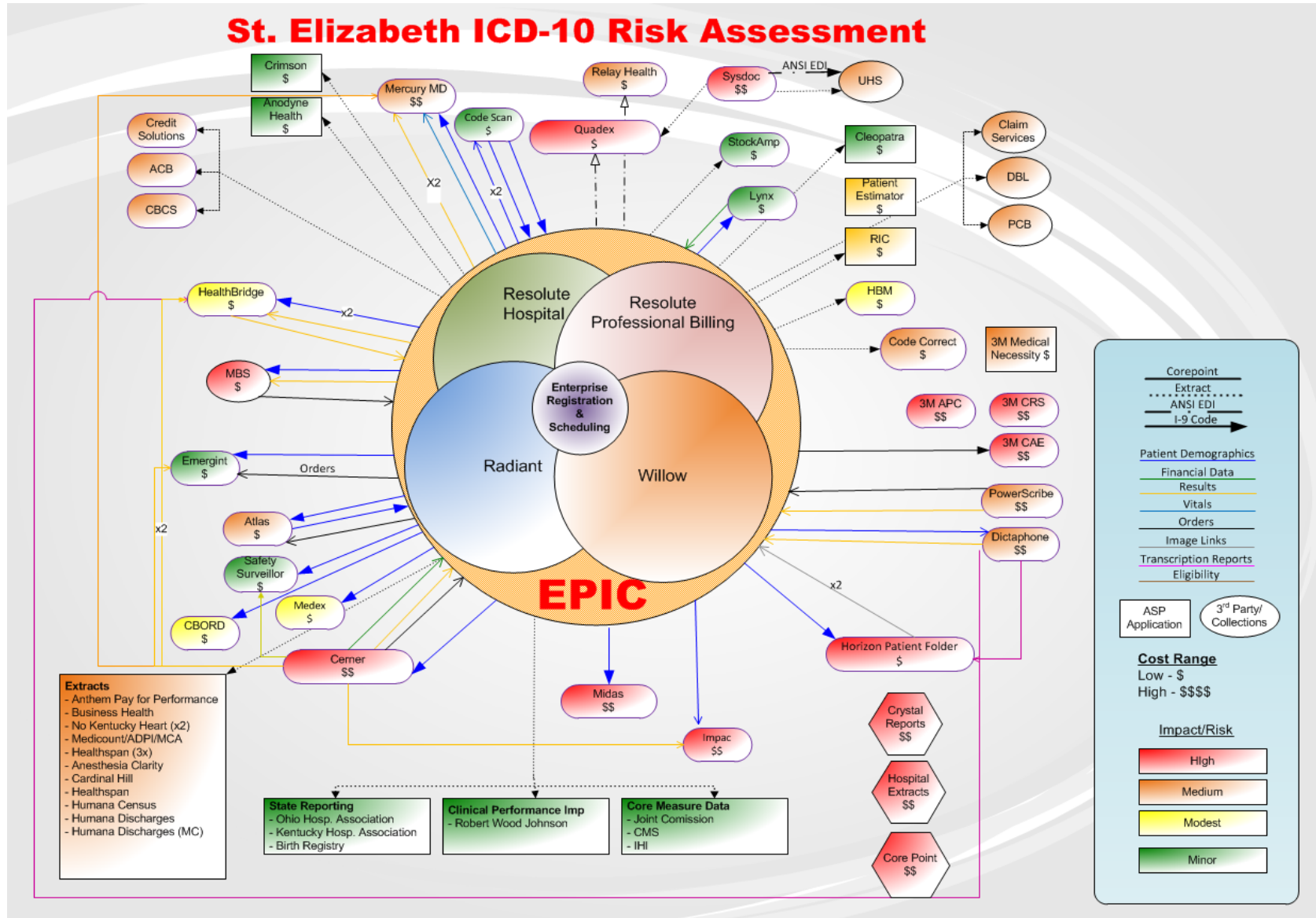
Ranking Area	Ranking Level
Impact	<p style="text-align: center;">High</p> <p>An event that, if it occurs, will cause significant delays in business operations.</p>
Risk	<p>Business operations will stop, work will cease at time of transition</p>
<p>Cost Range (in thousands)</p>	<p style="text-align: center;">\$\$\$\$</p>

Technology Assessment



Impact	Category	Description
\$\$\$	Applications	24 applications will require upgrades, testing and deployment
\$\$	Interfaces	20 interfaces will require modification, testing and implementation
\$	Partners	10 partners have use data containing ICD codes
\$\$	Extracts	40+ extracts will require modification, testing, and implementation

Technology Map



Initial Medium Impact Findings



- Multiple applications/vendor directly linked to revenue cycle currently in transition (new implementation, upgrade and replacement) without IT and stakeholder involvement
- Resources commitment to complete implementation activities, including tailoring, testing and verifying technology upgrades, will extend current resource allocation
- Revenue cycle resource training on ICD-10
- ICD-10 Program Charter and Steering Committee pending initiation, required to deploy resources

	Ranking Level
Ranking Area	Medium
Impact	An event that, if it occurs, will cause noticeable delays in business operations.
Risk	Business Operations may be interrupted without complete stoppage
Cost Range (in thousands)	\$\$\$

Initial Modest Impact Findings



- Medical Staff education will be needed to increase clinical documentation specificity relevant to an ICD-10 code will be necessary to reduce retrospective queries

	Ranking Level
Ranking Area	Modest
Impact	An event that, if it occurs, will cause small delays in business operations that, in most cases, can be absorbed by the current staff.
Risk	Business operations will continue will intermittent modifications to the process
Cost Range (in thousands)	\$\$

Initial Minor Impact Findings



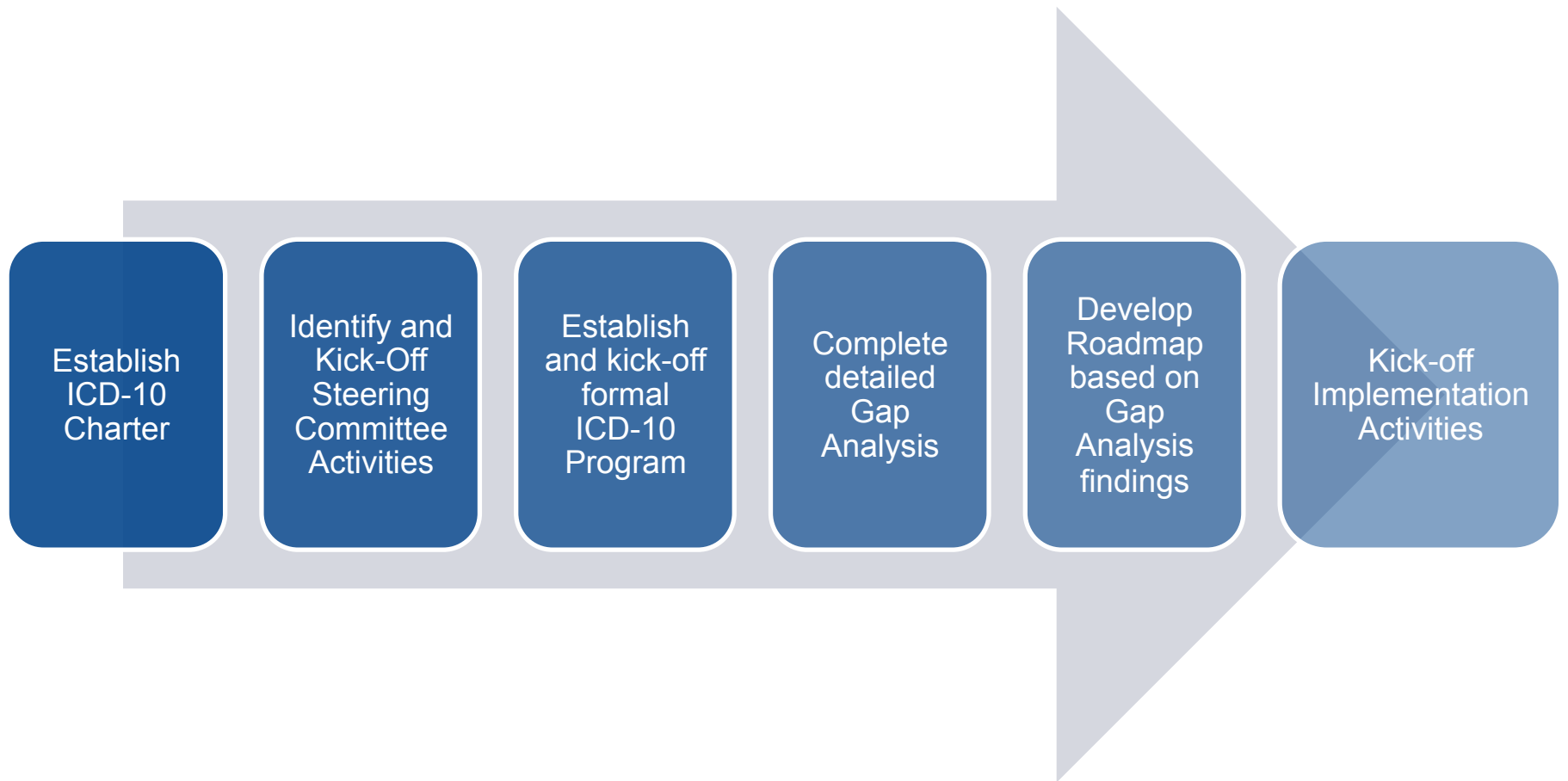
- Organizational structure today includes Program Management Office, required to facilitate an ICD-10 Implementation Program. Dedicated Program Management and Project Management resources to be allocated
- Coding practices of today will meet regulatory compliance requirements. Future mandates by CMS and payers may require practice revision as ICD-10 code set is deployed and used

	Ranking Level
Ranking Area	Minor
Impact	An event that, if it occurs, will cause little or no measurable impact to business operations.
Risk	Business operations will continue with minimal or routine modifications to the process
Cost Range (in thousands)	\$

ICD-10 Impact Assessment Project Findings

RECOMMENDED NEXT STEPS

Next Steps



Action Items



Establish ICD-10 Charter

- Engage Senior Leadership, name executive sponsor.

Identify and Kick-Off Steering Committee Activities

- Include representation from all stakeholder groups. Set expectations for steering committee member participation

Establish and kick-off formal ICD-10 Program

- Start as early as possible, technology modifications will be time consuming and most costly

Complete detailed Gap Analysis

- Be thorough in analysis, taking this opportunity to document findings for future project activities. Include workflow analysis in detailed analysis

Develop Roadmap based on Gap Analysis findings

- Detailed findings will provide budget and schedule estimates, required for roadmap development

Kick-off Implementation Activities

- Begin system modification, tailoring, training and change management activities

Action Plan Timeline



Q2 2011

Program Charter

Steering Committee

Program Leadership

Gap Analysis

Q3- Q4 2011

Final 5010 Testing/Go-Live activities

ICD-10 Roadmap

Budget

Schedule

Resource Allocation

Q1- Q2 2012

Initiative ICD-10 Implementation Activities

Education

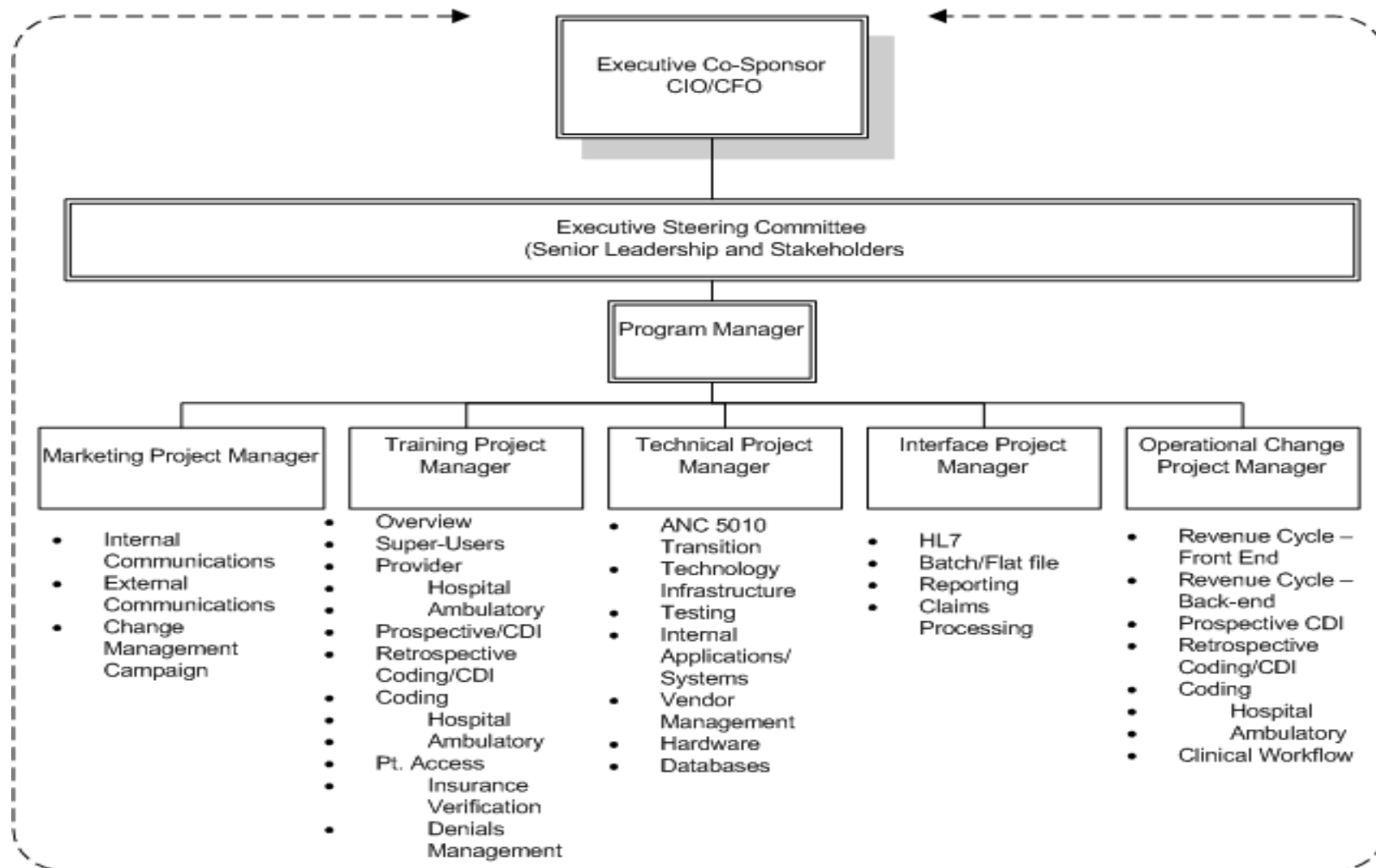
Technology

Change Management

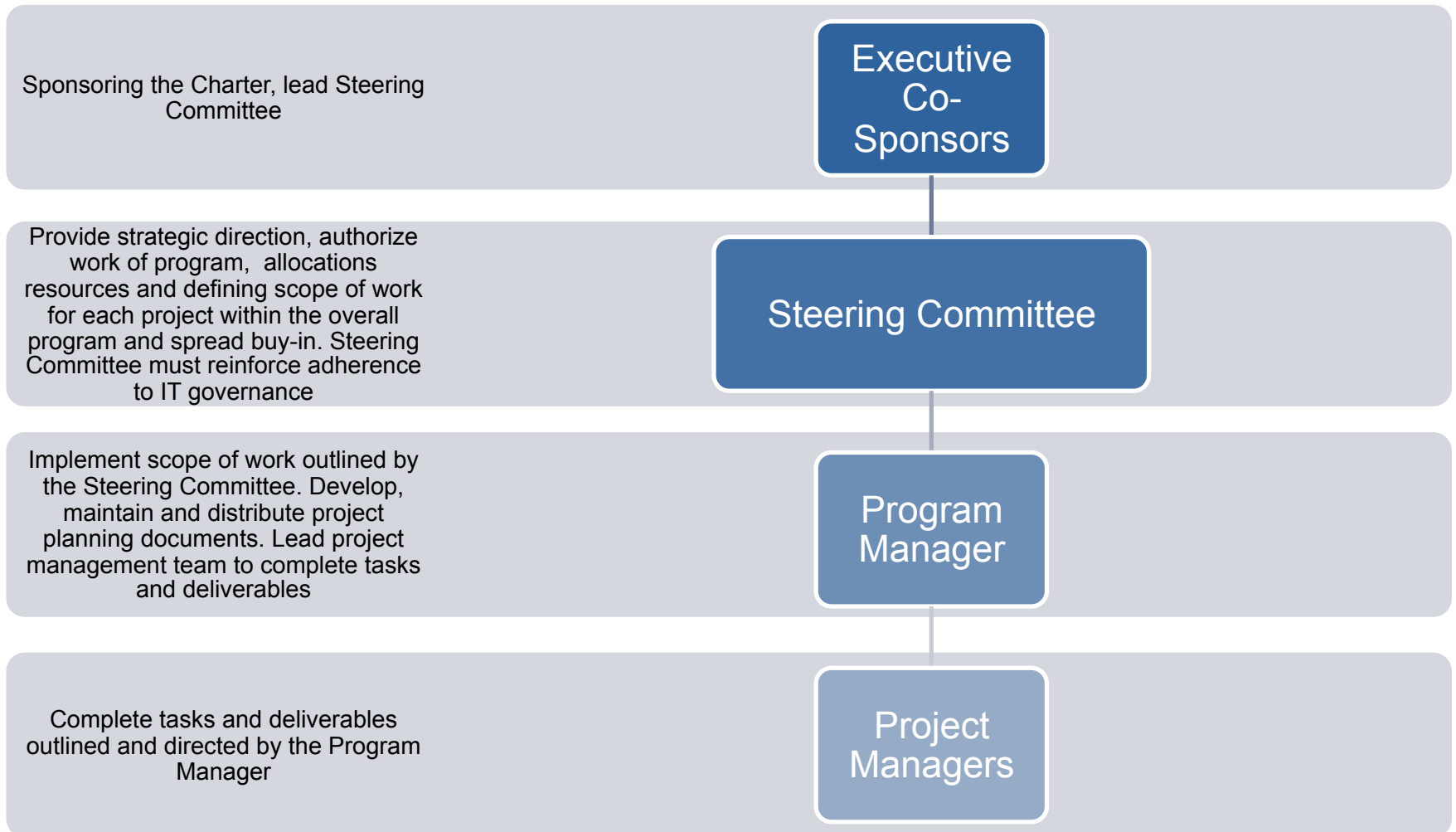
ICD-10 Impact Assessment Project Findings

RECOMMENDED ICD-10 PROGRAM STRUCTURE

Program Team



Roles & Responsibilities



ICD-10 Resource List



- ICD-10 and HIPAA *Federal Register* Notices
 - www.access.gpo.gov/su_docs/fedreg/a090116c.html
- CMS ICD-10 Web Site www.cms.gov/ICD10/
- CMS Medicare Learning Network/ICD-10-CM/PCS Myths & Facts
 - www.cms.gov/ICD10/Downloads/ICD-10MythsandFacts.pdf
- AHIMA www.ahima.org/icd10
- HIMSS www.himss.org/icd10
- National Center for Health Statistics – CDC – ICD-10-CM
 - www.cdc.gov/nchs/icd/icd10cm.htm
- HIPPA Code Set Rule: ICD-10 Implementation- An Executive Briefing
 - www.aha.org/aha/content/2009/pdf/09oct-ICD10briefing.pdf
 - **(NOTE: Must be AHA member to download)**